

Configure Workstation – Click-By-Click Directions

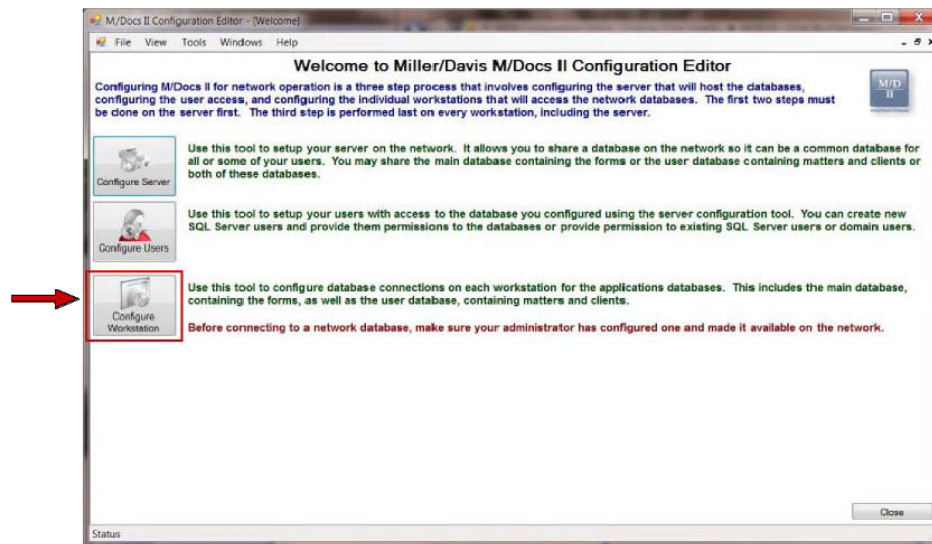
Click-By-Click Directions are designed so that each step equals one click. Checkboxes are provided for your convenience to check off as you progress through each step.

First, you will need to open the M/Docs II Configuration Editor:

1. Click on the **Start** button.
2. Click on **All Programs**.
3. Click on the **Miller Davis Company** folder.
4. Click on the **MDocs II 3.0** folder.
5. Click on **MDocsII Configuration Editor**.

Next you will need to open the Configure Workstation window:

1. Click on the button labeled **Configure Workstation**.



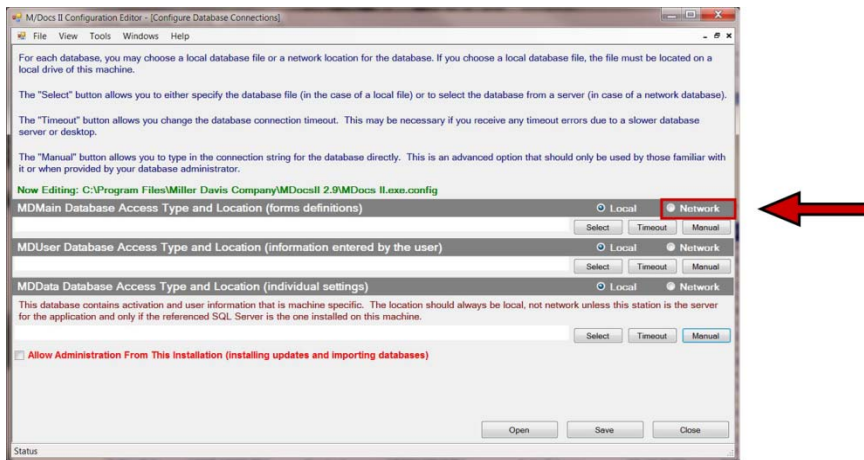
2. You will be prompted to select the configuration file, click OK.
3. The program will open a window with a file named **MDocs II.exe** (or **MDocs II.exe.config**), click on the file to select it.
4. Click **Open**.

This window will help you connect each workstation to the available network databases.

MDMain Database

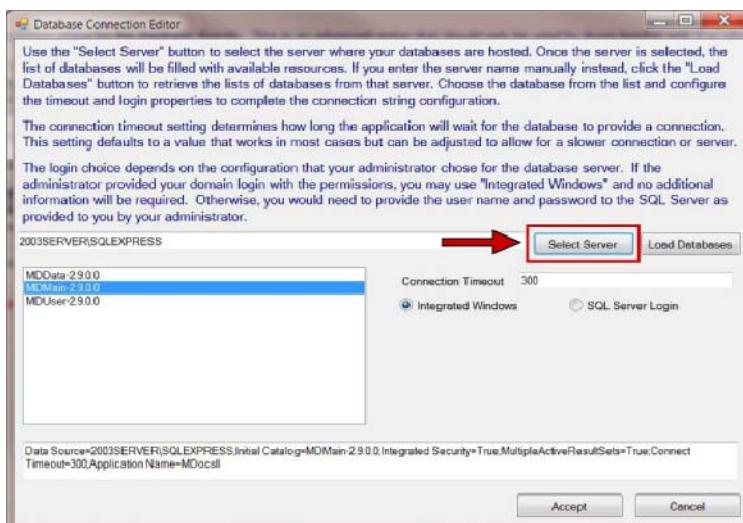
The MDMain database houses the blank forms. To change from a Local Install to a Network Install, do the following:

1. Click the **Network** radio button.



2. You will be prompted to change the connection string, click **Yes** to proceed.

3. A new window will appear. Click **Select Server** to bring up a list of available databases.



4. Choose the server you wish to connect to, and then click **Accept**.

5. If you have set up a SQL Server User login for this computer, then select **SQL Server Login** and enter the credentials, otherwise leave the Integrated Windows option selected.

6. Choose the **MDMain*** database (**Note:** a version number may appear in the database name), and then click **Accept**.

*If you renamed the MDMain database file, choose the appropriate database, and then click **Accept**.

MDUser Database

The MDUser database houses the user generated data, such as clients, matters and completed forms. To change from a Local Install to a Network Install, do the following:

1. Click the **Network** radio button.

2. You will be prompted to change the connection string, click **Yes** to proceed.

3. A new window will appear. Click **Select Server** to bring up a list of available databases.

If you know the server name, you may prefer to enter it manually in the available field. Then click **Load Databases**.

4. Choose the server you wish to connect to, and then click **Accept**.

5. If you have set up a SQL Server User login for this computer, then select **SQL Server Login** and enter the credentials.

6. Choose the **MDUser*** database, and then click **Accept**.

*If you renamed the MDUser database file, choose the appropriate database, and then click **Accept**.

7. Click **Save** in the lower right corner of the window, and then click **OK**.

MDData Database

This database contains activation and user settings and is computer specific. The location should always be local, not network, unless this station is the server for the application and only if the referenced SQL Server is the one installed on this computer.

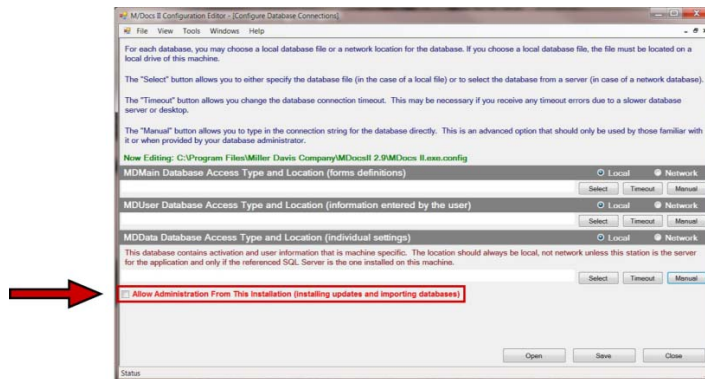
Allow Administration

Checking the **Allow Administration From This Installation** checkbox will add the following M/Docs II features under the Tools menu for this computer:

- Import Main Data
- Import User Data
- Import Activation From Old Database
- Backup Main Database
- Apply Database

If you do not want the person working at this station to be able to perform these tasks, leave this box unchecked.

If you choose to allow for administration on this computer, check the box.



1. Click **Save** in the lower right corner of the window, and then click **OK**.
2. Click **Close** in the lower right corner of the window.